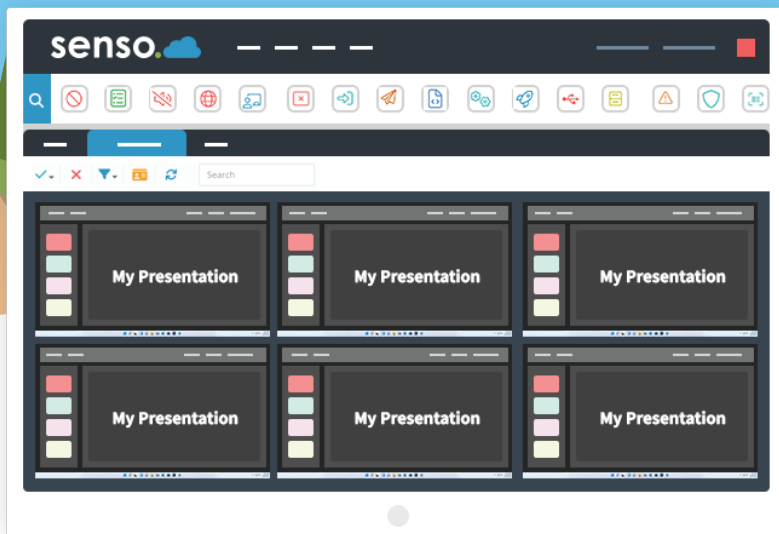




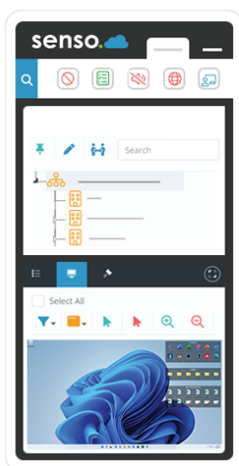
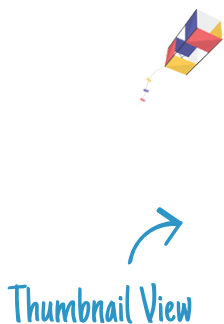
# Class Cloud Bundle

Monitor and teach from anywhere without distraction, our monitoring and control modules are designed to put control back in the teachers' hands.



## CLASS CLOUD BENEFITS

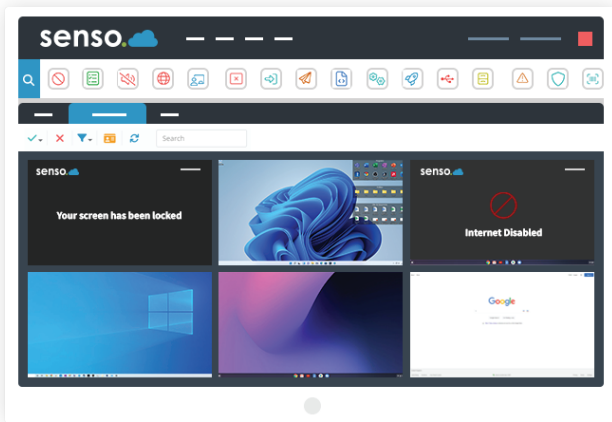
With our Classroom Management Software, teach from anywhere in the world. Monitor and manage your class with live thumbnails and more, keeping you in control.



- ✓ **Classroom Management Tools.**  
Take control of the class and elevate your lessons to the next level.
- ✓ **Collaborative Teaching.**  
Share screens and engage the entire class through presentations.
- ✓ **Keep Students on Task.**  
Monitor the screens of student devices.
- ✓ **Block Unwanted Distractions.**  
Keep students focused with 'Disable Web' and 'Block Sound'.
- ✓ **Completely Web-based.**  
Teach smarter and log in from anywhere with the Senso portal.

# OUR ESSENTIAL MODULES

Live Thumbnail View ↗



## Live Thumbnail View

Monitoring made easy, with the option to take control of devices if help is required.

## Remote Control

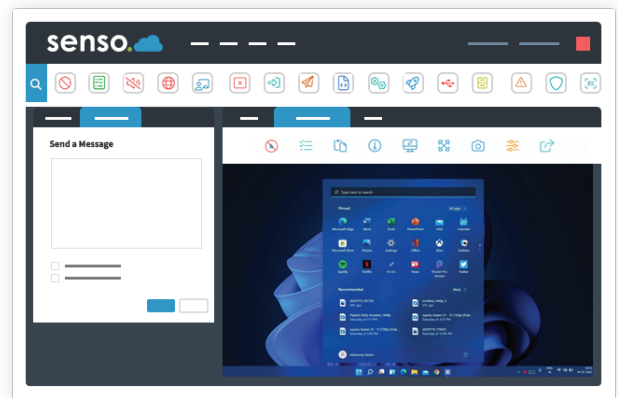
Take control of devices with ease. Easily assist a user or take control of a single device, or of multiple devices.

## Send Message

Send a message to a single student or to multiple students. Prompt students in just a few clicks.

## Substitute Teacher

Share groups with substitute teachers or teaching aids. Administrators can invite a substitute teacher to see all of their required classes.



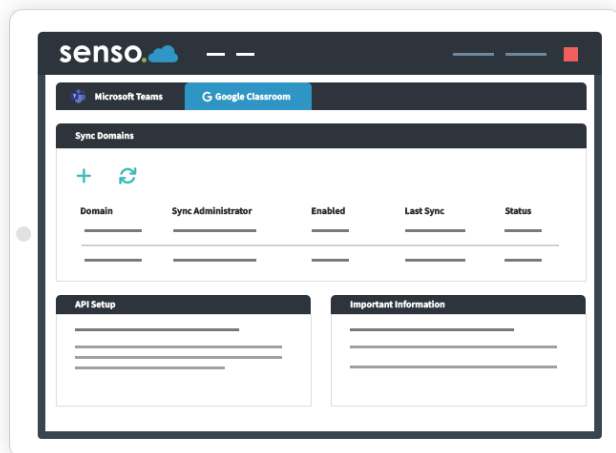
Send Message ↗

## Microsoft Teams Sync

Effortlessly sync your school or business' Microsoft Teams groups automatically for easy screen access.

## Google Classroom Sync

Your school Google Classroom groups can be synced automatically for easy screen access.



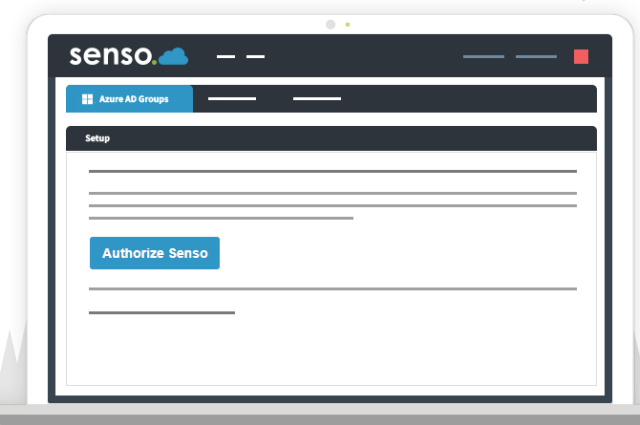
Azure AD ↗

## Azure AD

Azure AD allows access to grouping and user-based information. Allows automatic sync to pull.

## Client Updater

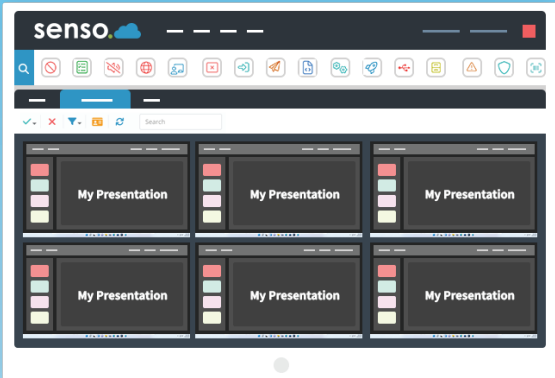
Update your client in just a single click or schedule an update for a more convenient time.





# CLASSROOM MONITORING & MANAGEMENT

Broadcast Screen ↘



## Broadcast Screen

Allows you to share your screen or another students' screen with the rest of the class. Perfect for sharing presentations.

## Launch

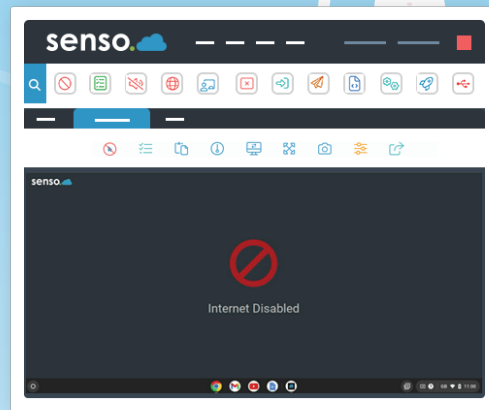
Open an application or a specific website for the entire class to keeps students on task.

## Block Sound

Mute devices in your class or change the volume level of their device to limit distractions.

## Block Web

Easily disable and enable internet browsing whilst keeping essential applications connected.



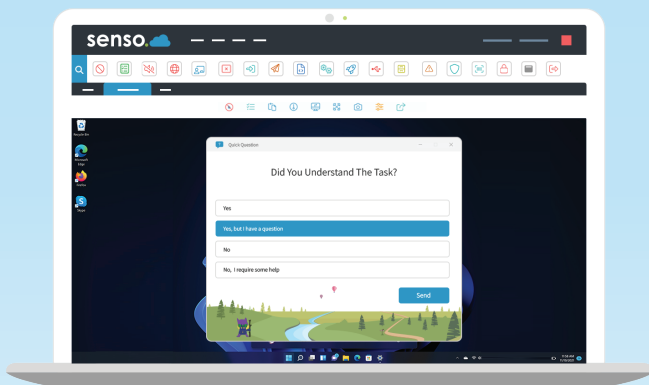
↙ Block Web

## Q&A Module

Ask the entire class a multiple choice question and see the results, or send a single student a question.

## Client Live Chat

Allows a two-way chat between a console and user. Ideal for offering remote support to students during lessons.



↙ Q&A Module

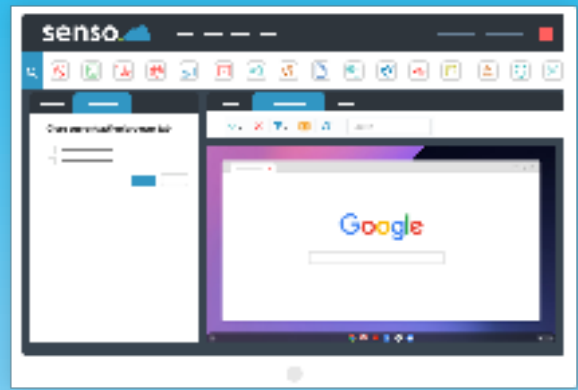


## Clever Sync

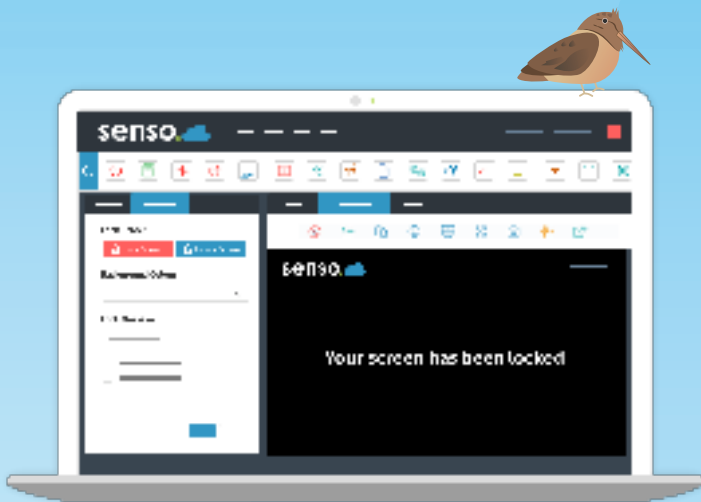
Allows you to easily import all of your classroom groups, giving staff members access to the correct groups and live thumbnails.

## Close Tab

In just a few clicks, close the active browser tab on your students' Chrome browsers to get them back to the task at hand.



↩ Close Tab



↩ Lock Screen

## Lock Screen

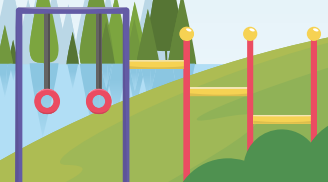
Lock the screens of all selected devices, grab everyone's attention with a customisable message.

## Send File

Access and send files from anywhere to single or multiple devices. Send File has the ability to run files as an administrator.

## Client Tool Bar

Show a toolbar with Show Support Ticket option, Anonymous Reports, join PIN Group options and Show Raise Concern option.



# OUR PARTNERSHIP WITH PSP

With 20+ years of experience working in senior leadership roles in education, our technology professionals will act as your digital lead. We'll ensure your technology delivers value for money and complies with the latest guidance from the DfE.

As a Senso partner, we can provide quick and easy installation of Senso software and deploy the tool across all your school devices. The service we offer is customisable based on your school size, integrations, licensing, and features, and more.

When you purchase your Senso solutions through PSP, you benefit from fully supported implementation and deployment, on-demand customer support, along with advice from our technical consultants.



## PRICING



**CLASS  
CLOUD**

**£2.45** / device ann.



**NETWORK  
CLOUD**

**£2.45** / device ann.



**SAFEGUARD  
CLOUD**

**£3.45** / device ann.



**ENTERPRISE  
CLOUD**

**£5.45** / device ann.



**MICROSOFT  
TEAMS**

**£0.95** user / year



**CONTENT  
FILTERING**

**£1.95** device / year



**ASSISTED  
MONITORING**

Get in touch for more  
information

## SEE SENSO SOFTWARE IN ACTION

Get in touch with one of our technology professionals and see how Senso's filtering and monitoring software can help your school.

Let's talk

Visit site